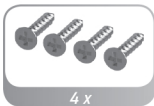
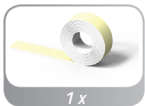


# Vedruga sääsevõrgu paigaldusjuhend

**AKNAKATE**  
[www.aknakate.ee](http://www.aknakate.ee)

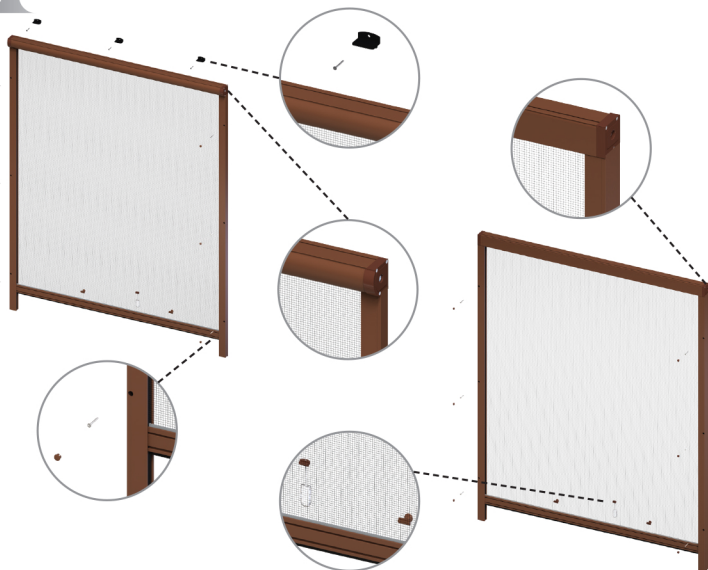
tarvikud komplektis • supplied in the set;



vajalikud tööriistad • necessary tools;



A



## Paigaldus / mounting

1



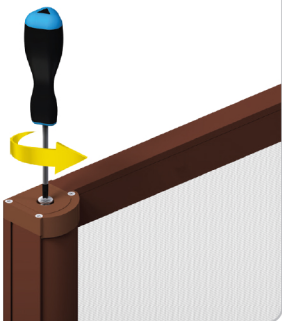
Paigaldus nišši sisse

2

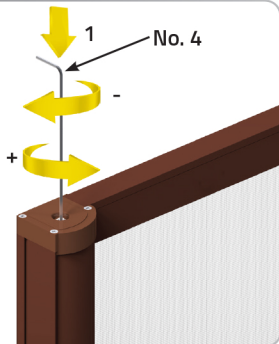


Paigaldus seinale

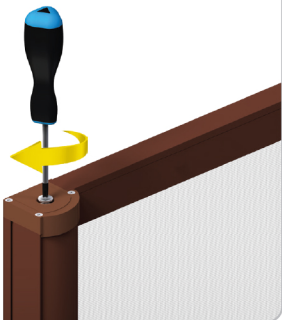
3



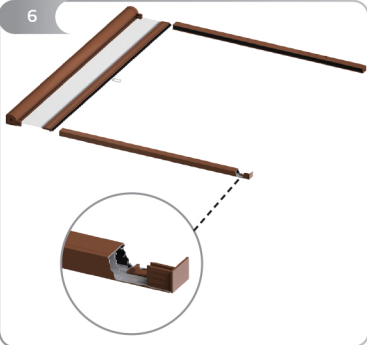
4



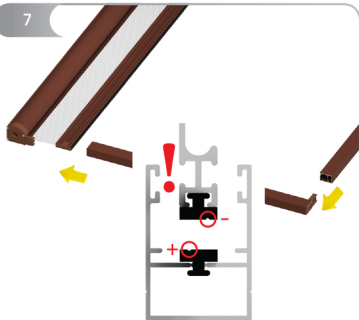
5



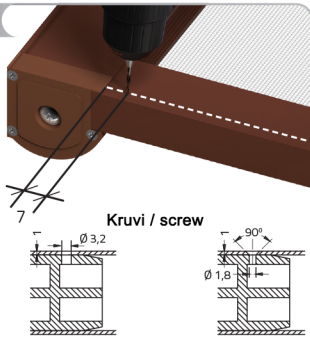
6



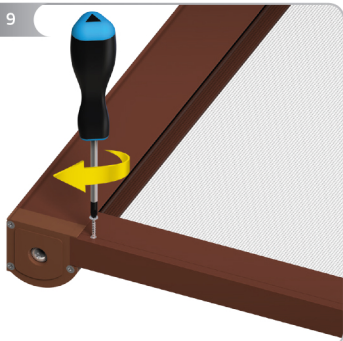
7



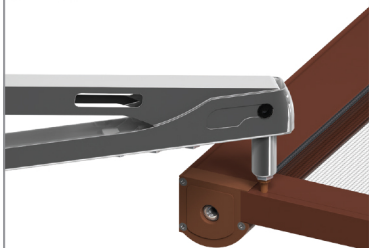
8



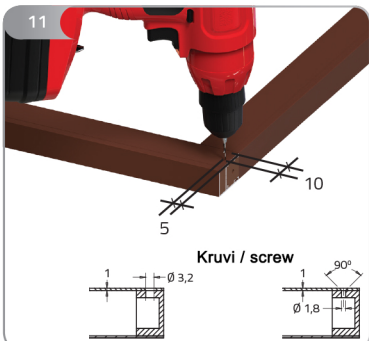
9



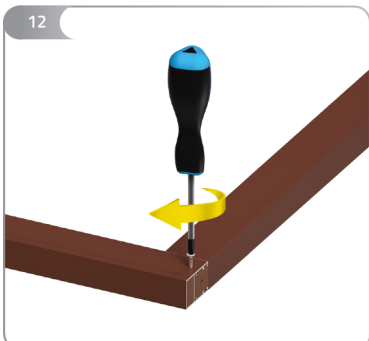
10



11



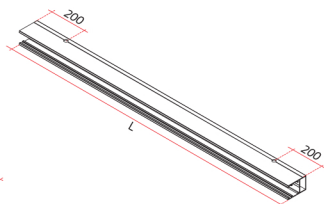
12



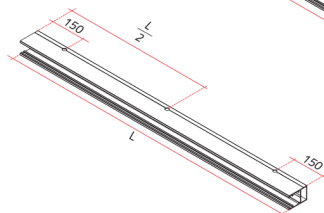


Oleneb kruvitüübist ja suurusest  $\text{Ø } 3,5$   
Depending on the size of the screw  $\text{Ø } 3,5$

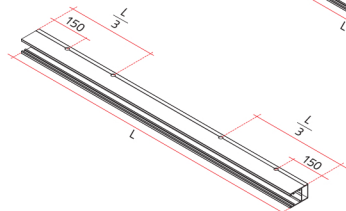
$$1. L = 0 + 1200 \text{ mm}$$



$$2. L = 1201 + 1800 \text{ mm}$$



$$3. L = 1801 + 2600 \text{ mm}$$



16



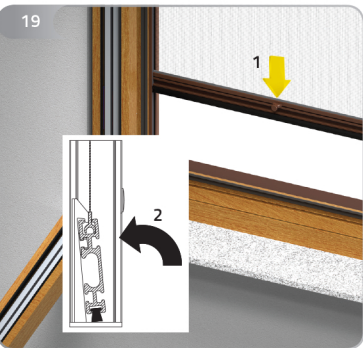
17



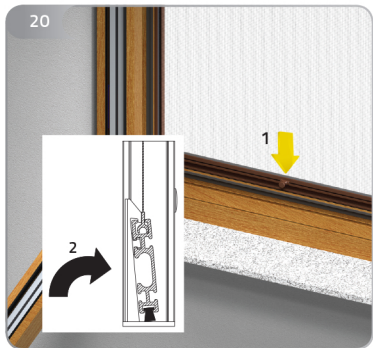
18



19



20





### **Paigaldus ja mõõtmine**

- Mõõtmise ja paigaldus peab tegema vastava väljaõppe saanud paigaldaja
- Tootja ei vastuta vigase mõõtmise või paigalduse eest

### **Kasutamine**

- Sääsvõrku on võimalik liigutada kasutades käepidet/nööri
- Sääsevõrku tohib kasutada/liigutada ainult juhul kui ees ei ole takistusi
- Kui putukavõrgul esineb rikkeid siis teavitage sellest müügiesindajale

### **Hooldamine**

- Võrku tuleks puhastada vähemalt korra kuus (niiske lapiga tõmmata puhtaks kogunenud mustusest)
- Suurtemate hooldustööde või remondi ajal (mis hõlmavad liigse mustuse/tolmu teket) tuleks sääsevõrk katta kinni või paigutada kindlasse kohta eemale tolmu ja mustuse allikast

### **Tootja ei vastuta:**

- Toote võrgu purunemise eest vale kasutuse tagajärjel
- Otstarbele mittevastava paigalduse eest
- Kahju eest, mille tekitab klient volitamata muudatuste või parandustega
- Välimuse kaotuse eest määrumise, pesemise, kemikaalide kahjustamise jms tagajärjel
- Värvipinna kriimustamise ja võrgu kahjustamise eest toote kliendi poolt lahtipakkimise ajal
- Mehaaniliste vigastuste ja kahjustuste eest, mis on tekkinud:
  - toote väärkasutuse tagajärjel
  - hooletu hoidmise ja ülekoormamise tagajärjel
  - tootja paigaldusjuhendi suuniste mittejärgmise tulemusena
  - juhuslike sündmuste eest korteri üleujutus, kahju loomade poolt lumi jms.



### **Mounting and measurement**

- Mounting and measurement must be carried out by trained personnel only.
- The manufacturer is not liable for damage caused by incorrect mounting and/or measurement.

### **Operation**

- The screen is opened using bar/mullion with fitted handle.
- The screen can be operated only when there are no obstacles within its operational range.
- Should your insect screen malfunction, please report the fact to the seller.

### **Care and maintenance**

- The screen should be cleaned at least once a month.
- The screen should be retracted into protective storage housing when not in use, when exposed to excessive dust or during renovation works.

### **The manufacturer is not liable for:**

- Improper mesh tension caused by incorrect operation.
  - Damages resulting from mounting the screen in a manner inconsistent with its intended use (eg. in interiors continually exposed to high humidity, or next to sources of heat which may deform the mesh). • The screen's loss of aesthetic appeal due to soiling, use of inappropriate chemical agents etc.
  - Damages resulting from unauthorised alterations and/or repairs carried out by clients.
  - Scratches on the painted surface and damaged mesh resulting from improper unpacking of the screen.
  - Mechanical and other damage caused by:
    - improper use of the screen
    - its incorrect storage and overloading
    - not following user manual mounting instructions
    - random events eg. flooding, interaction with animals, impact of strong wind, frost and snow.
- Screens should be retracted into protective storage housing for protection.